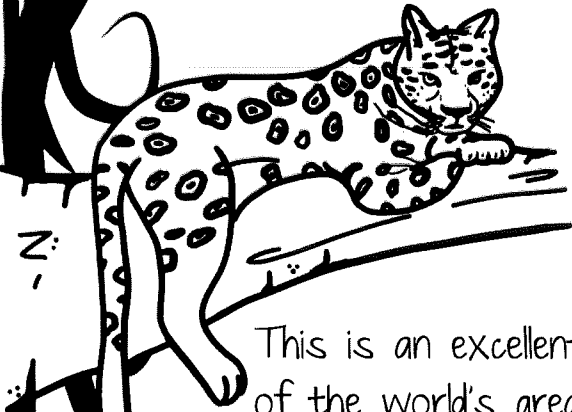




**Discovery**  
in The  
**RAINFOREST**

# THE EXPEDITION

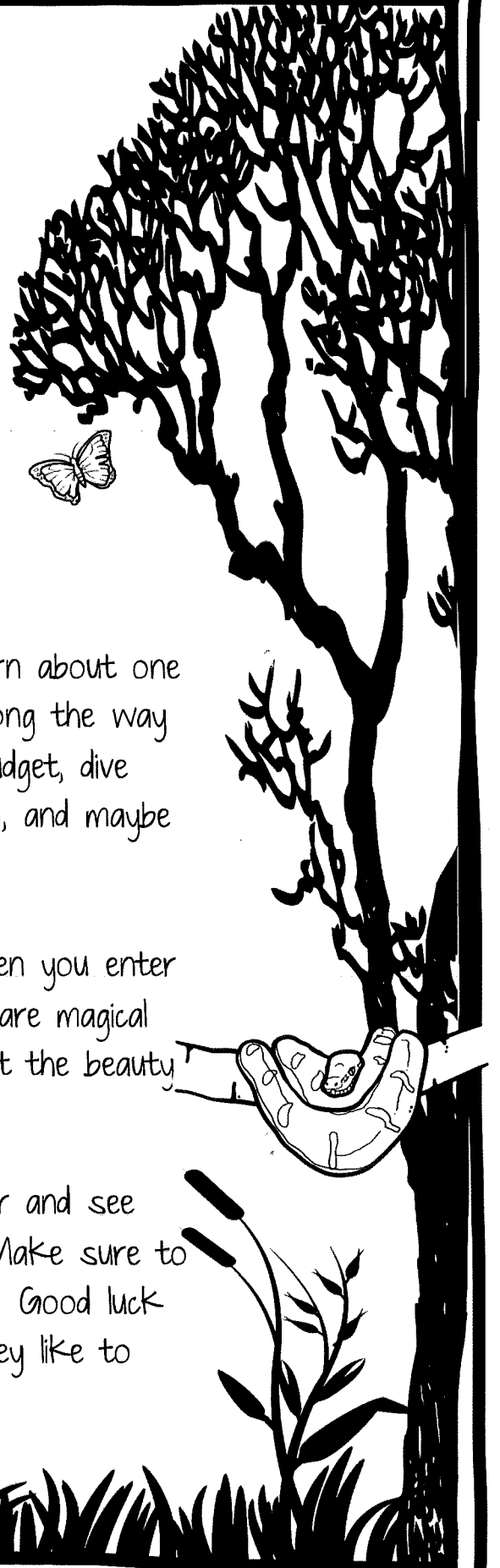
Congratulations! You've been chosen as part of a scientific expedition team to travel to the rainforests for research and exploration.



This is an excellent opportunity to learn about one of the world's greatest resources. Along the way you will pick supplies, work from a budget, dive into research, assist with conservation, and maybe run into a sloth.

You never know what can happen when you enter a rainforest. Some people claim they are magical places, while others are just amazed at the beauty and life within the jungles.

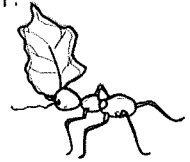
Your classmates will be excited to hear and see what you've learned during your trip. Make sure to gather great information and artifacts. Good luck and watch out for those piranhas! They like to nibble on toes.



# PACK YOUR BAGS

Choose only eight items you think you'll need for your trip?  
List and explain why you will need each item.

REMEMBER! You are headed to a jungle!



1

---

---

---

2

---

---

---

3

---

---

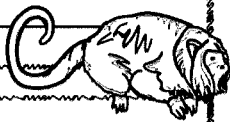
---

4

---

---

---



5

---

---

---

6

---

---

---

7

---

---

---

8

---

---

---



# WHAT DO YOU KNOW?

Rainforests and jungles around the world are filled with amazing creatures, lush vegetation, beautiful landscape, indigenous people, and a world of science.

What do you think you know about the rainforests? Collaborate with you classmates if needed.

**AVERAGE RAINFALL**

**PLANTS AND TREES**

**CLIMATE & TEMPERATURE**

**SIZE**

**AMPHIBIANS**

**MAMMALS**

**ENEMIES**

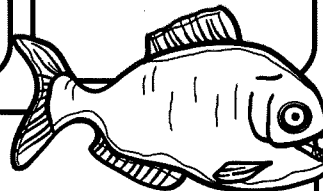
**BENEFITS**

**PEOPLE**

**ENEMIES**

**MYTHS**

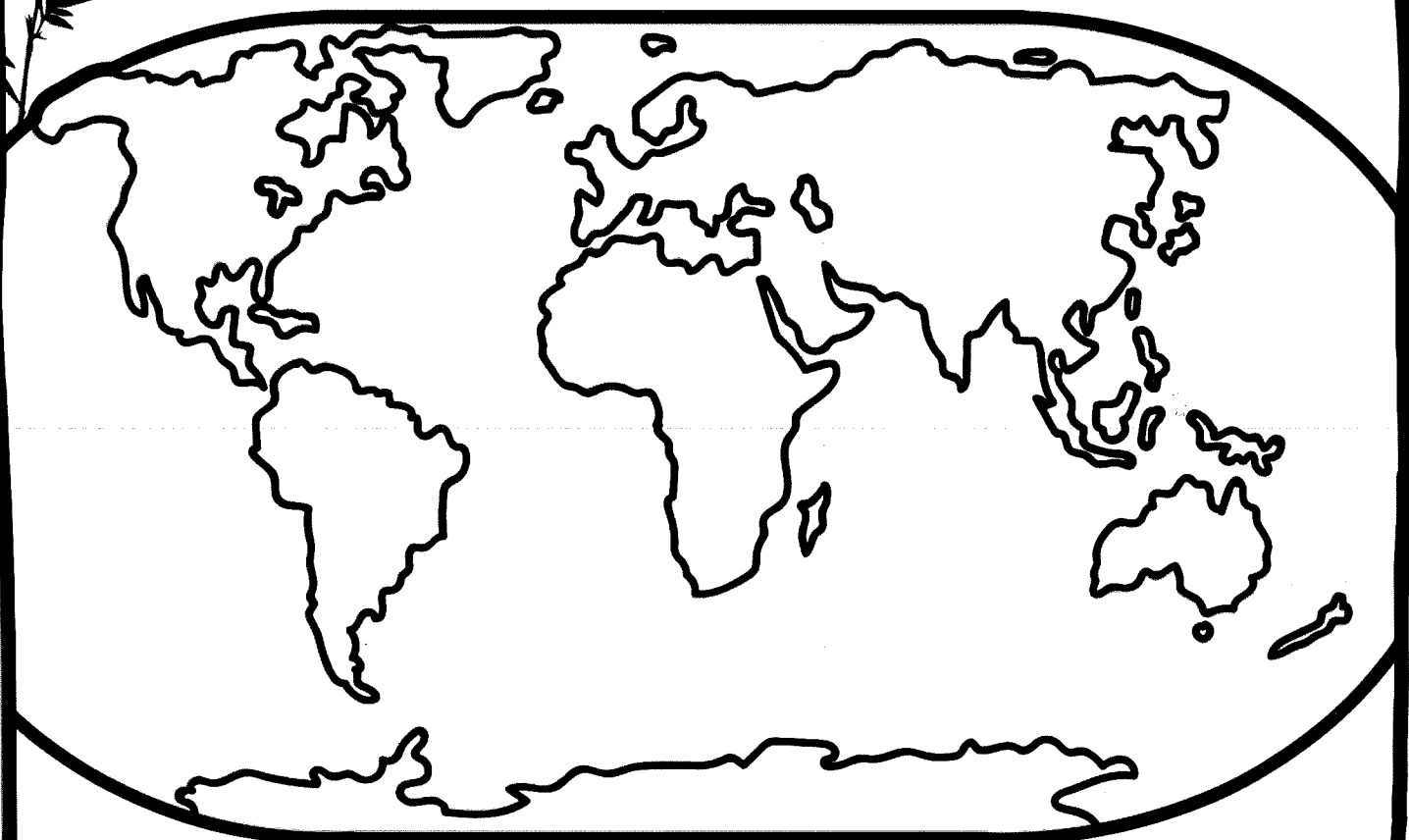
**RAINFOREST TYPES**



# A RAINFOREST WORLD

Color in the locations of the 8 major rainforests around the world. Include a color key. Each forest should be a different color. Use books, maps, and online resources to assist you.

- |                          |                                    |                          |                                     |
|--------------------------|------------------------------------|--------------------------|-------------------------------------|
| <input type="checkbox"/> | <b>THE AMAZON</b>                  | <input type="checkbox"/> | <b>AUSTRALIAN RAINFOREST</b>        |
| <input type="checkbox"/> | <b>CONGO RIVER BASIN</b>           | <input type="checkbox"/> | <b>SOUTHEAST ASIAN RAINFOREST</b>   |
| <input type="checkbox"/> | <b>OLYMPIC RAINFOREST</b>          | <input type="checkbox"/> | <b>MADAGASCAR RAINFOREST</b>        |
| <input type="checkbox"/> | <b>CENTRAL AMERICAN RAINFOREST</b> | <input type="checkbox"/> | <b>SCANDINAVIAN COASTAL CONIFER</b> |



Did you find any other rainforests? If so, color it on the map with a new color and create a new color code below, naming the rainforest.

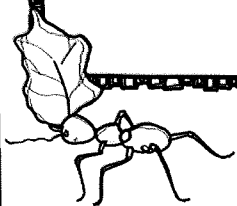
# JUNGLE SUPPLIES



You have 100 credits budgeted for supplies. Pick items you will need and keep track of your total credits. Do not exceed your 100 credit limit!

## MOST IMPORTANT SUPPLY EXPLAIN WHY.

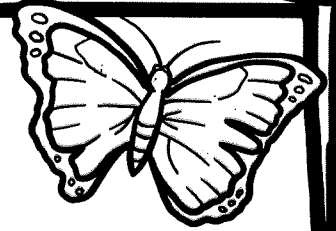
## IF I DIDN'T RUN OUT OF CREDITS I'D CHOOSE... EXPLAIN WHY.



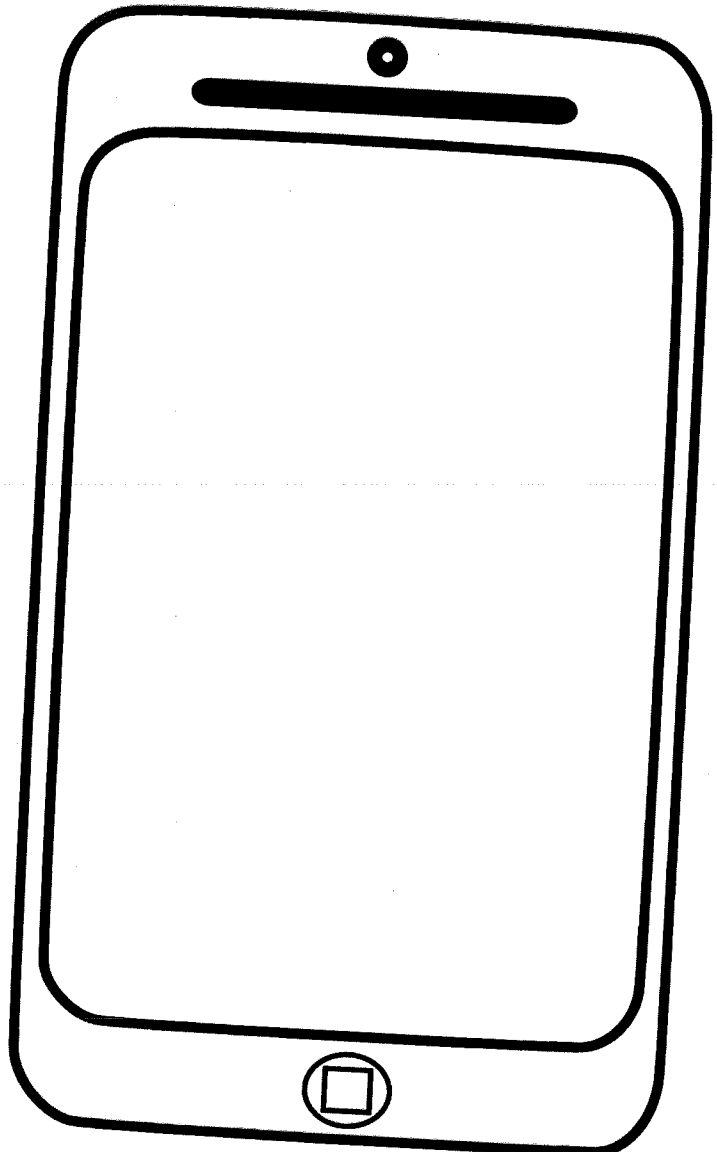
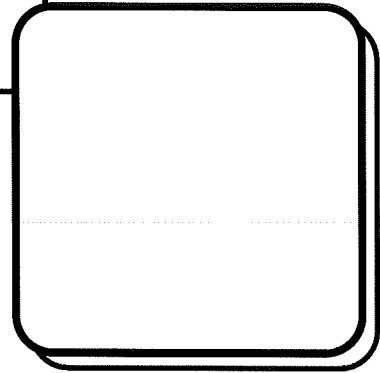
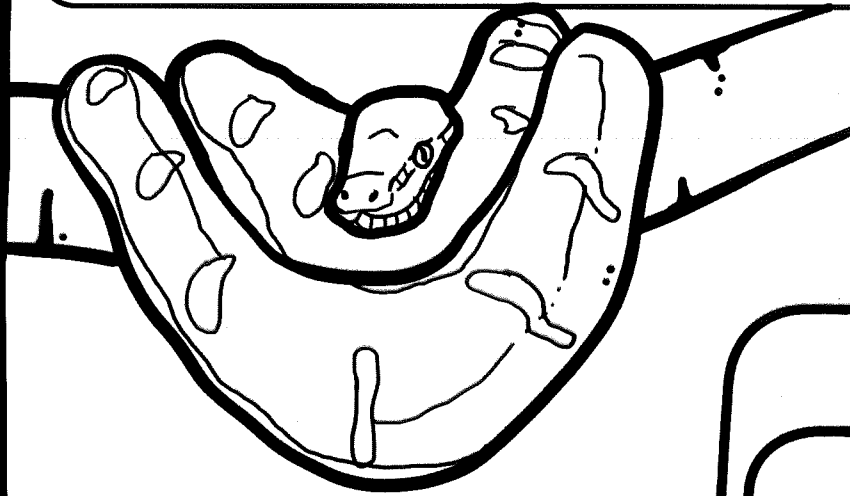
ITEMS	CREDITS PER ITEM	NUMBER OF ITEMS	TOTAL
backpack	5		
bug spray	1		
mosquito net	2		
hammock	3		
boots	5		
rugged laptop computer	12		
digital camera	12		
satellite phone	10		
lighter/matches/flint	3		
poncho	2		
10 jugs of water	6		
binoculars	5		
first aid kit	7		
tools	9		
tent	12		
food packs	15		
flashlight	7		
fishing equipment	15		
animal tracking devices	17		
motion sensor cameras	14		
tour guide	19		
motor boat	20		
donkey	13		

**TOTAL**

# ANIMAL APP



Create an app about a rainforest animal. Design the icon (on the right) and create a screenshot from the app on the smart phone below.



**IS THIS A GAME OR EDUCATIONAL? EXPLAIN**

Blank space for explaining if the app is a game or educational.

**WHAT WILL IT DO? HOW WILL IT WORK?**

Blank space for describing the app's functionality.

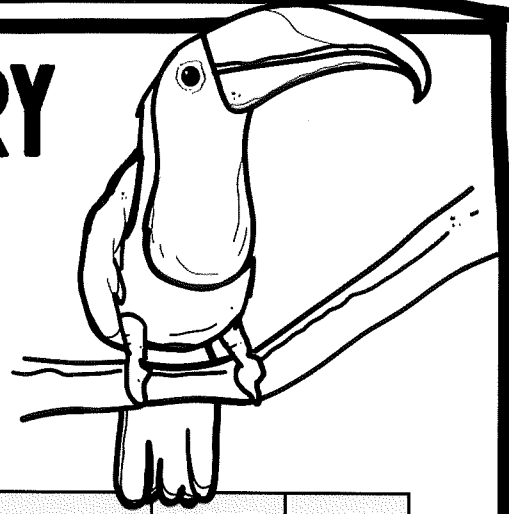
**WHO WILL USE THIS APP? WHY?**


Blank space for identifying the target audience and their reasons for using the app.

# ANIMAL INVENTORY

## PART ONE

WOW! You saw 50 animals on your first couple of days in the jungle! Use the checklist and mark off exactly what you saw. Don't go over fifty!



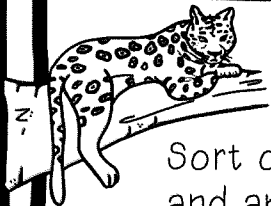
ANIMALS	NUMBER SEEN	TOTAL
anaconda		
jaguar		
spider monkey		
giant anteater		
toucan		
manatee 		
macaw		
poison arrow frog		
black caiman		
pink river dolphin		
tamarin		
kingfisher		
howler monkey		
sloth		
coati		

ANIMALS	NUMBER SEEN	TOTAL
tortoise		
gecko		
harpy eagle		
amazon parrot		
monkey frog		
leaf toad		
cane toad		
scarlet ibis		
horned screamer		
parakeet		
river otter		
green iguana		
anole		
emerald boa		
tapir		

**TOTAL**







# ANIMAL INVENTORY PART TWO

Sort out all the animals you saw by type: mammal, bird, reptile, and amphibian. Use resources to help you if you are not sure about the type of animal.

**MAMMALS**

**REPTILES**

**BIRDS**

**AMPHIBIANS**

**TOTAL SEEN**

**TOTAL SEEN**

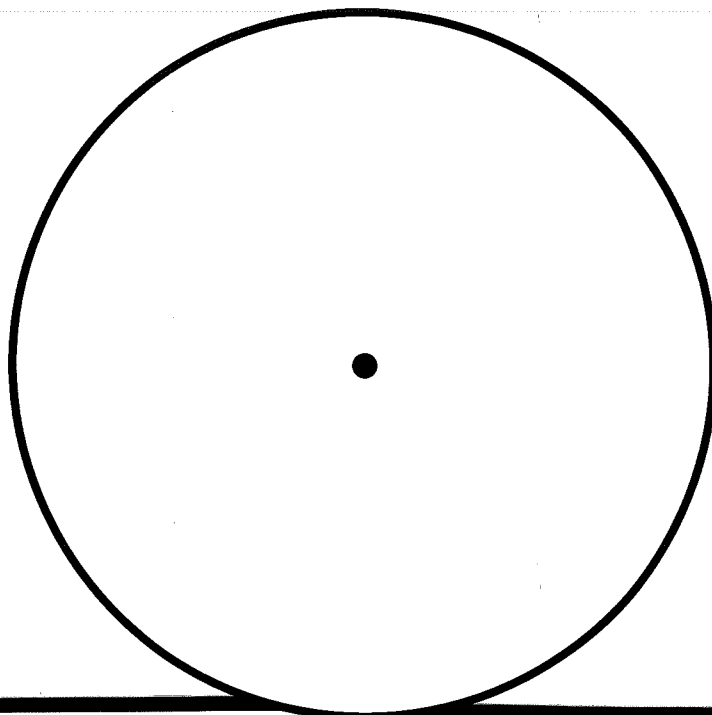
**TOTAL SEEN**

**TOTAL SEEN**

Take the above total and create a pie chart. The chart should have four different color pieces, and include the total for each section.

## ANIMAL TYPES

- MAMMALS**
- REPTILES**
- BIRDS**
- AMPHIBIANS**



# LAYERS OF THE FOREST

Draw 5 animals (from your list) into this illustration of the rainforest. Place the animals in the locations they live. Color the entire page and add more details (like animals or plants).

EMERGENT

CANOPY

UNDERSTORY

FOREST FLOOR

# JOURNAL ENTRIES

Write four journal entries about these problems you encountered in the jungle.

## STUCK IN QUICKSAND

---

---

---

---

---

---

---

---

## A MONKEY STOLE MY CAMERA

---

---

---

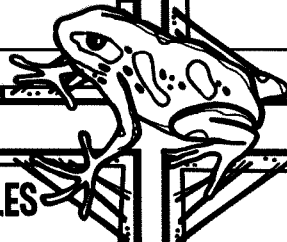
---

---

---

---

---



## SWIMMING WITH CROCODILES

---

---

---

---

---

---

---

---

## MOSQUITOS EVERYWHERE

---

---

---

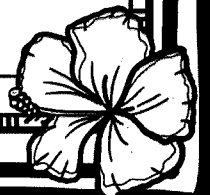
---

---

---

---

---



# INSECT INQUIRY

While traveling through the rainforest you capture a brand new insect that no one has ever seen. Draw a picture of the bug in the jar. Fill out information on your new discovery.



**BUG NAME**

**SIZE**

**WHAT IT LOOKS LIKE:**



**WHERE IT LIVES AND HOW IT SURVIVES:**

**DIET:**

**PREY OF:**

**PREDATOR TO:**

**HOW DOES IT ADAPT TO SURROUNDINGS:**

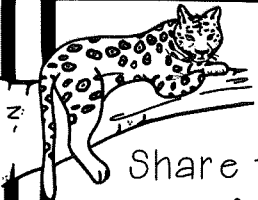
# MAGAZINE MEDIA



Create a cover for the magazine, "Our Planet". Make the focus be on saving, protecting, and conserving the rainforests around the world.



Use real magazine covers as examples to help you.



# FORESTAGRAM

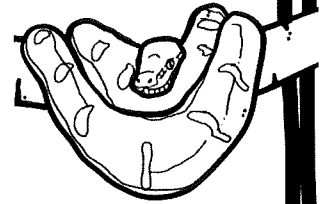
Share two pictures (draw them) from your adventure with your followers via Forestagram! Everyone loves social media! The photos can be animals, foods eaten, geography, plants, or anything else you choose.

Include total LIKES and responses you've gotten back from followers! Add more responses if needed.



# THE ADAPTATION CHAIN

All animals are part of a food chain/web and use adaptations to help them survive. Pick one animal from the rainforest and fill out the information below.



## ANIMAL

draw a picture

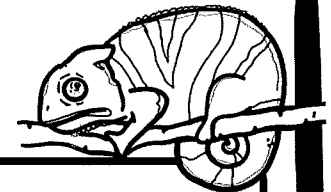
PREY



PREDATORS



## ADAPTATIONS FOR SURVIVAL



Body Parts

Body Covering

Actions (what they can do)

What animal adaptation would you like to have? Explain.

# MAPPING THE RAINFOREST

Draw a map of the jungle journey you've made. Include geographical features listed in the map key below. Include your route and choose more items to fill out your map. Remember to add them to the map key!

## M · A · P · K · E · Y

**WATERFALL**

**SWAMP/WETLAND**

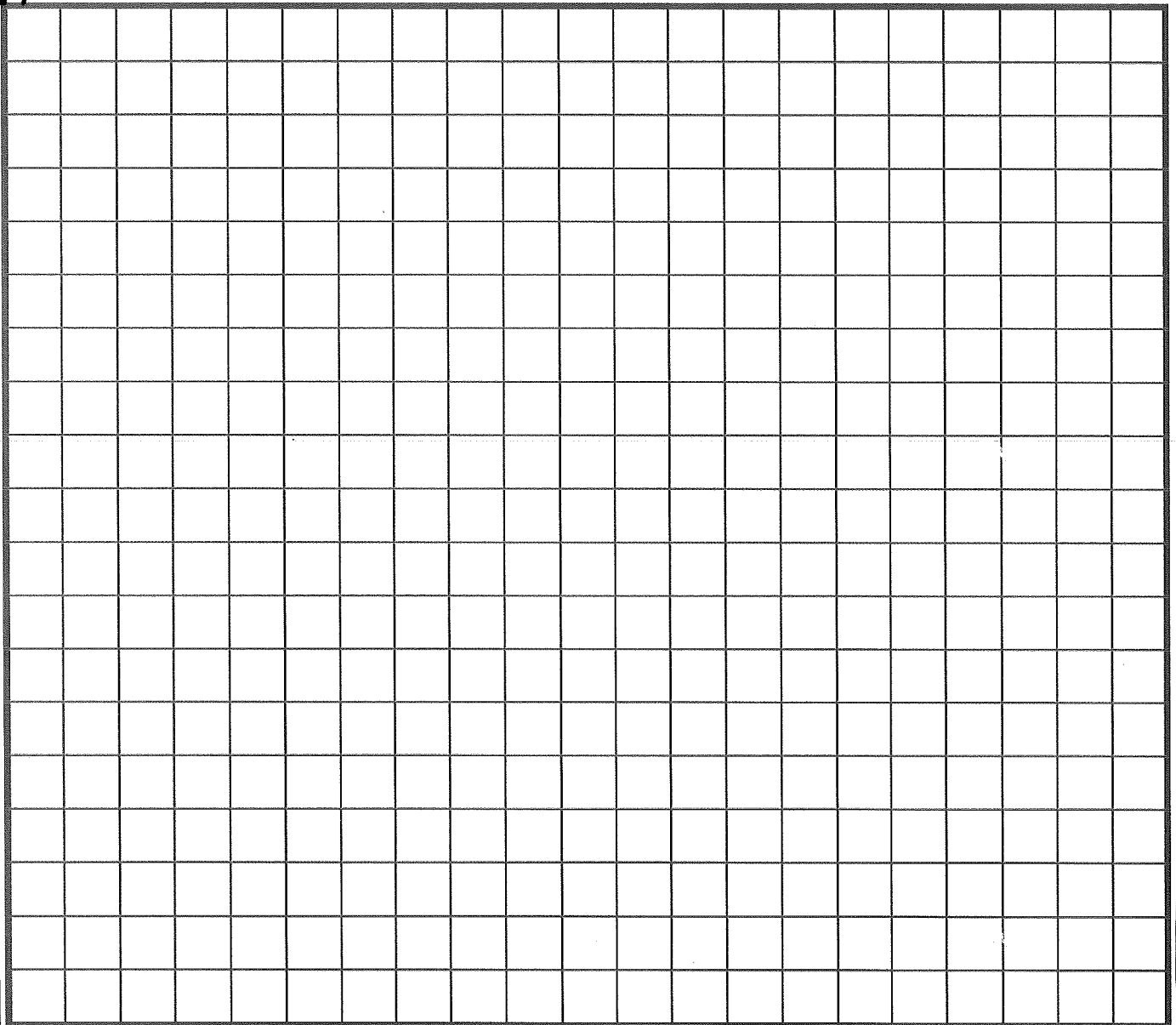
**ROUTE**

**RIVER**

**STREAMS**

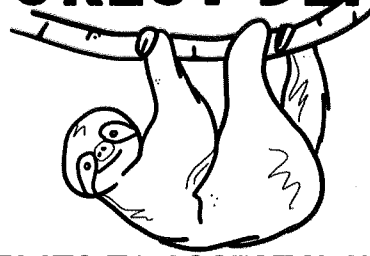
**VALLEY**

**HIGHLAND**



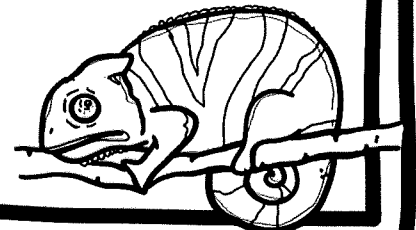


# THE FOREST BEFORE US



## USE THESE RAINFOREST FACTS TO ASSIST YOU ON THE FOLLOWING PAGES.

- 10% of the worlds' species live in the Amazon Rainforest.
- 20% of the worlds' bird species live in the Amazon Rainforest.
- 50% of the worlds' animals and plants live in rainforests.
- Rainforests are found on every continent, except Antarctica.
- There are two types of rainforest; temperate and tropical
- 25% of all natural medicines have been found in the rainforests.
- Over 2,000 tropical plants from rainforests have anti-cancer properties.
- 20% of the world's freshwater is found in the Amazon Basin.
- Since the year 2000 almost 2.5 million square kilometers of rainforest have been cut down. That is almost half the size of the United States.
- Parts of the rainforest are destroyed every day by logging, mining, farming, and ranching.
- There are many enormous underground rivers run through the Amazon.
- Some parts of a rainforest never see light from the sun because the canopy is so dense with trees.
- Most tropical rainforests are found near the equator because it needs a warmer climate to thrive.
- Most species in the rainforests have a symbiotic relationship because they all work together to survive and thrive.
- Great civilizations like the Mayas, Incas, and Aztecs lived in the rainforests.
- Rainforests are called "the lungs of the planet" for their role in helping Earth survive.





# THE FOREST BEFORE US



**CHOOSE ONE OF THESE FINAL PROJECTS BEFORE YOU LEAVE THE RAINFOREST:**

Complete this final task separately.

## **1 WRITE A LETTER TO YOUR LOCAL POLITICIAN ON THE IMPORTANCE OF THE RAINFORESTS.**

Rainforests are important. Write a letter to a politician about why they need to be saved. Include stats, information you've learned, and ways to save these incredible places. Consider mailing this letter and trying to make a positive difference in the world.

## **2 CREATE A TRAVEL BROCHURE FOR A RAINFOREST.**

Design and create a travel brochure on the rainforest. Include information that will inform and interest other people.

## **3 CREATE AN INFOGRAPHIC**

Create an infographic using statistics and information on the amazing impact rainforests have on the world.

## **4 RAINFOREST TOURS**

Design a rainforest tour. Include places you'll visit, what you would see, prices, how you will travel, and what tourists can do.